

SkyNET 2000 Quick Configuration Guide

Before start, get ready for the following items

1. CG101UTC, USB to Com cable x 1



2. CG101UT5, USB to 5 Pin cable x 1



3. CG101TP-SKY, Tools Panel for SkyNET x 1



4. Laptop computer with Windows XP / Window 7 (1 USB port is needed)



5. SkyNET Planner Software

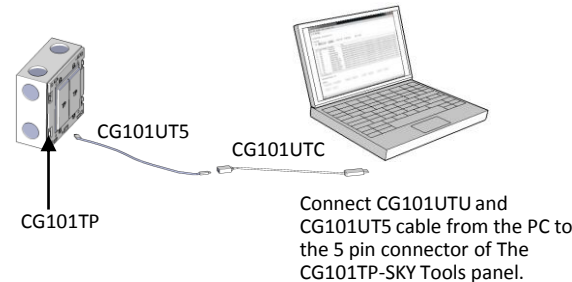
Procedure for Configuration

- Connect CG101UTC USB to COM cable to your computer before starting the “SkyNet Planer” Software.
- Run the “SkyNet Planer” Software.
- Load the



SkyNet Mockup.xml

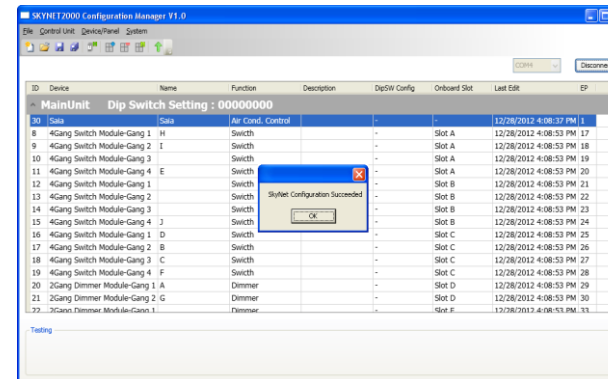
- by clicking menu “File >> Open Project” (You will be provided with the default Configuration file of the example mock up room.)
- Install all the Hardware of the SkyNet System properly and power Off the system.
- Take out one of the SkyNet Panel from the wall, you will see a bracket left on the wall box.
- Install the CG101TP-SKY Tools Panel for SkyNET onto the bracket.



- Power On the SkyNet System.
- Connect the PC to the Tools Panel for configuration:
 - a) The CG101UTC, USB to COM should be connected to the PC at Step 1.
 - b) Connect the mini USB side of the CG101UT5 cable to the CG101UTC.
 - c) Connect the 5pin Head(white) of the CG101UT5 to the programming port of the Tools Panel.
- Once the Hardware connection finished, Power on the SkyNet System.
- Select the COM port and press the “connect” button in the program (ie, the SkyNET Planner Software).

If there is no COM port shown on the program, please restart the program and load the configuration file again.)

11. Upload the Configuration to the Main-Unit by clicking Menu: System>>Upload Setting
12. Wait Until Success Message box show Up



(It will take minutes to transfer data if the project/configuration is complicated)

P.S. If Configuration fail, Please check the Hardware installation of SkyNet, the power of the SkyNet System and the connection wiring.

Reference information:

1. For detail operation and specification, please refer to user manual and product specification.
2. For detail programming of the product, please refer to SkyNET Planner Software user manual.

www.Citygrowsys.com

Before getting started

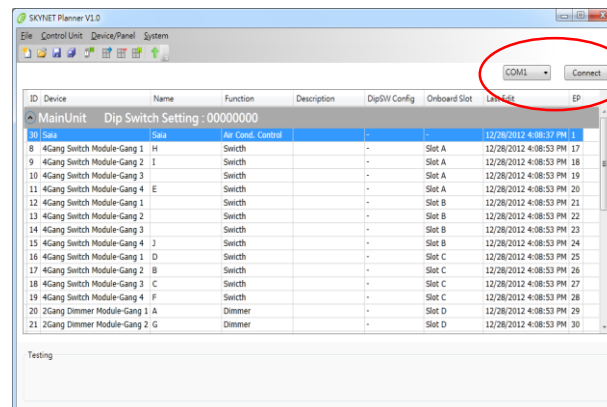
WARNING! The product must be installed by a qualified electrician in accordance with all applicable regulations and building codes. Improper wiring can result in personal injury or damage to control units or other equipment. Always turn off circuit breaker or remove main fuse from power line before doing any work. To avoid overheating and possible damage to equipment.

WARNING! Do not operate control units with any lamps removed or burned out; replace any burned out lamps immediately; use only transformers that incorporate thermal protection or fused primary windings. ! The product is designed for residential and commercial use, for indoor use only.

WARNING! Install in accordance with all national and local electrical codes.

IMPORTANT! Citygrow® is not liable for any damage incurred with the misuse of this product.

IMPORTANT! Pre-setup can only be done by a professional worker or manufacturer agent.



Nothing contained in this publication is to be construed as granting any right, by implication or otherwise, for the manufacture, sale, or use in connection with any method, apparatus, or product covered by letters patent, or as insuring anyone against liability for infringement of letters patent. Efforts have been made to ensure the accuracy and reliability of the data contained in this publication; however, Citygrow Energy Systems Limited. makes no representation, warranty, or guarantee in connection with this publication and hereby expressly disclaims any liability or responsibility for loss or damage resulting from its use or from the use of any product or methodology described herein; for any violation of any federal, state, or municipal regulation with which this publication may conflict; or for the infringement of any patent from the use of this publication. Nothing contained in this publication should be viewed as an endorsement by Citygrow Energy Systems Limited. of any particular manufacturer’s products.