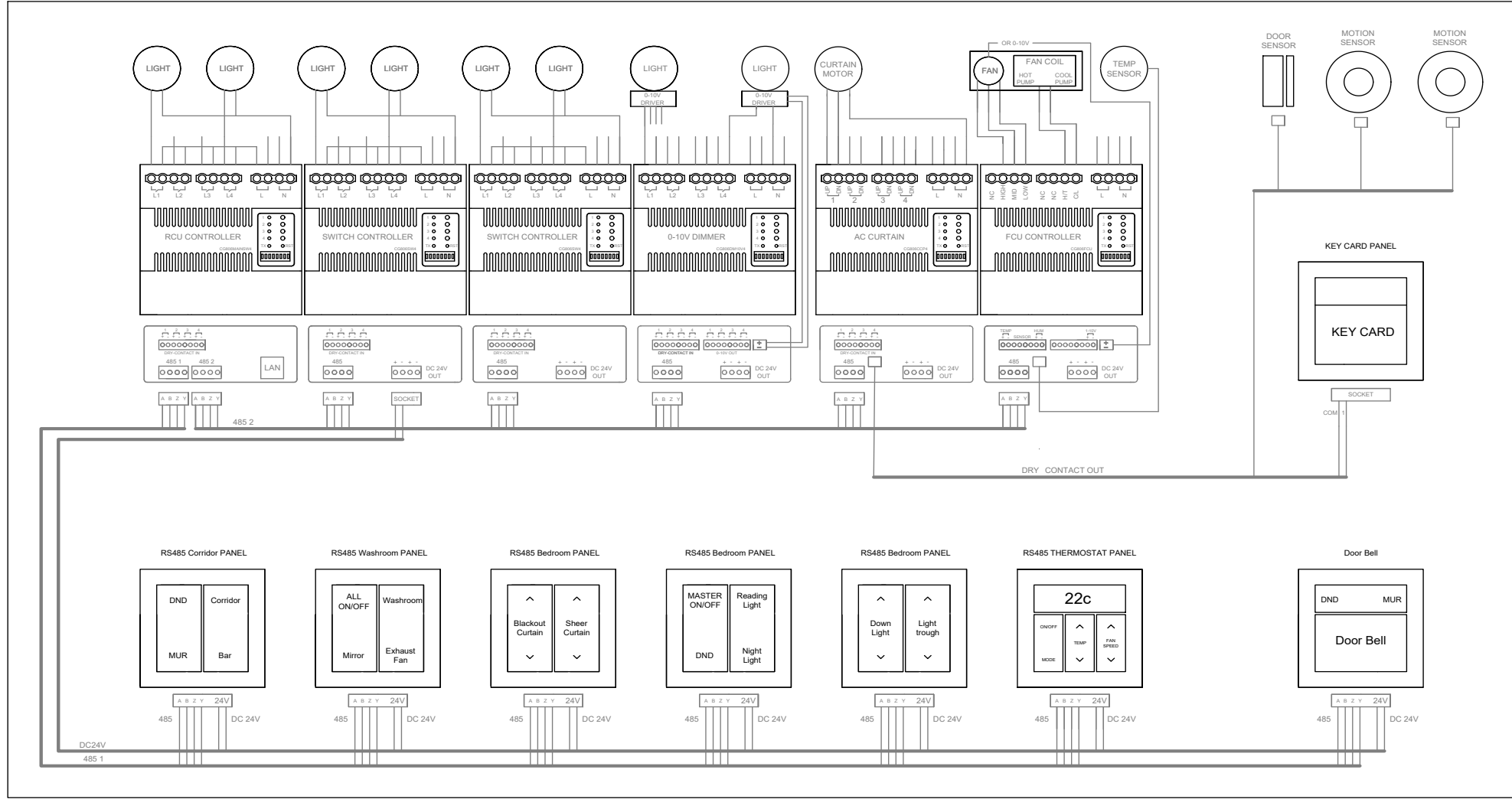


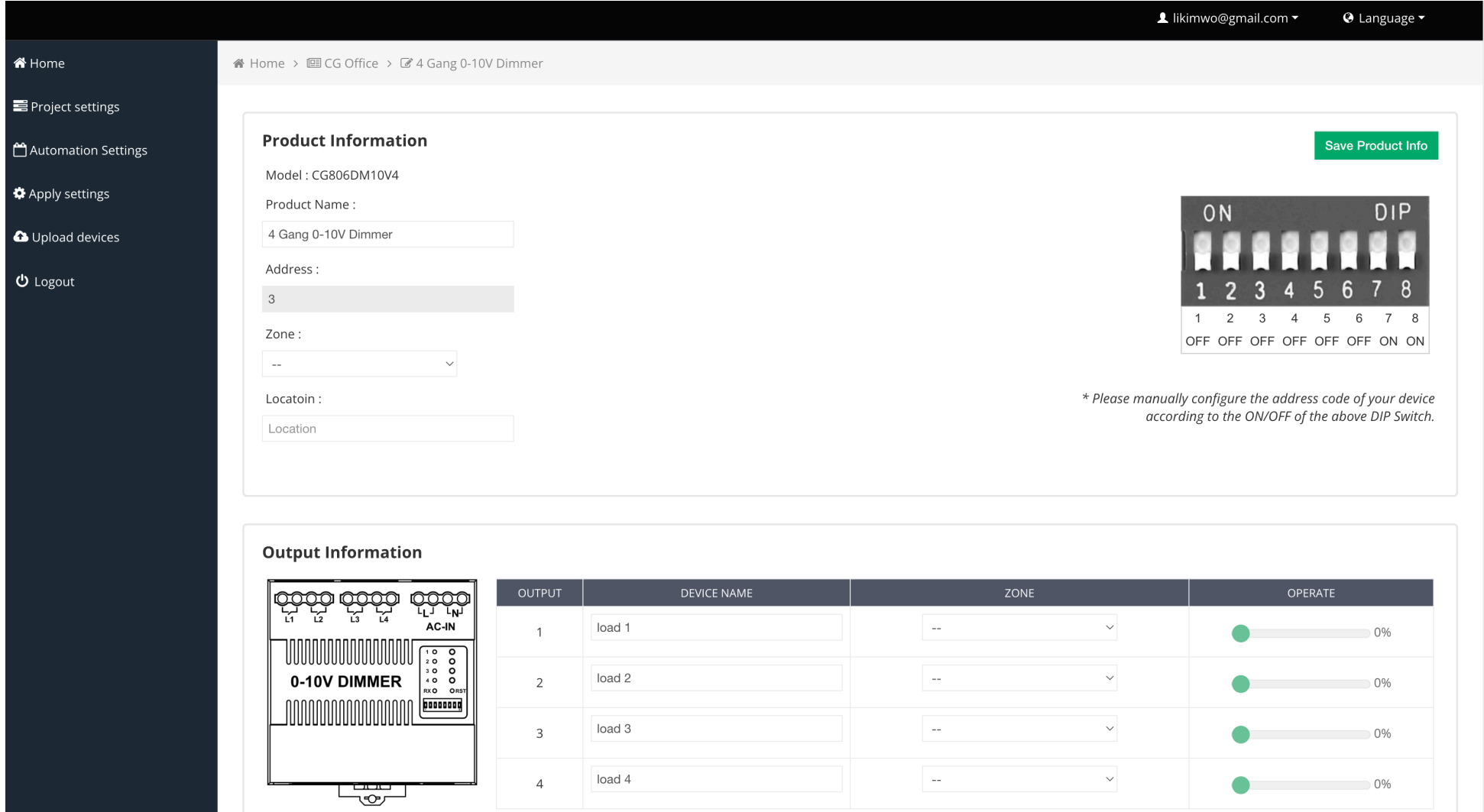
CityGrow 806 Hotel Wired Application Diagram



Application Description

- 1. The application example can support 12 gang light switch, 4 gang 0-10V dimming, 4 gang of curtain control, 1 gang air conditioning control and door bell control by key card insert, which can be increased or decreased according to your needs.
- 2. The system supports 485 FULL-DUPLEX and HALF-DUPLEX two wiring methods, you can flexibly deploy according to the actual situation.
- 3. The modular design can be combined freely and supports 252 or more different types of modules.
- 4. The main board is embedded with 485 and dry contact interfaces. Can choose Citygrow or other third-party dry contact panels. Also able to connect sensors from different manufacturers sensor device such as: motion sensor, light sensor, door contact, water leakage, fire alarm, etc.
- 5. The module build-in power supply, which can supply 2 other modules or 6 panels at the same time.
- 6. System can use the motion sensor and door sensor to cooperate with the OPERA system to monitor whether the guests in room and control the lights, curtains, and air-conditioning temperature to achieve the purpose of comfort and energy saving.
- 7. The system can be connected to Oracle Hospitality OPERA and other management systems to effectively improve cost efficiency and fully meet operational needs.
- 8. Users able to configure the diffent type modules through the web version of Citygrow's HomeNET Planner, and freely match and modify it anytime and anywhere.
- 9. Users able to update the software remotely, which is simple and convenient.

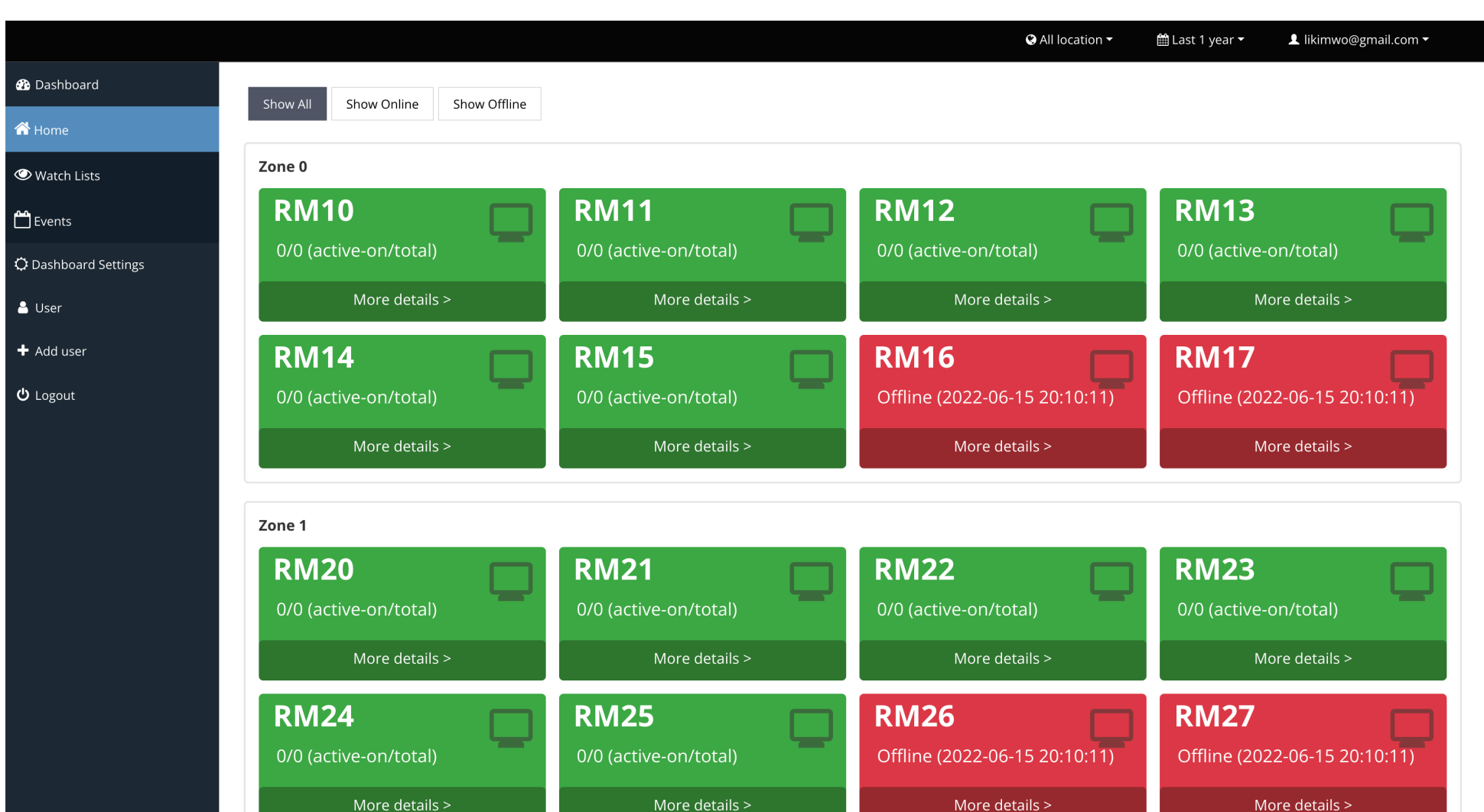
HomeNET Planner Web Version



HomeNET Planner Desription

- 1. Users able to test and setup all different types of devices through the HomeNET Planner details page, and can freely match different scene controls.
- 2. System able to set the configuration and user permissions , which is convenient for management.
- 3. Users able to set the lighting fade in/fade out time, synchronization time and minimum/maximum effective dimming range through the HomeNET Planner.
- 4. Users able to set the automation conditions from perform, and use environmental sensors to automatically adjust lights, curtains, air conditioners, etc.

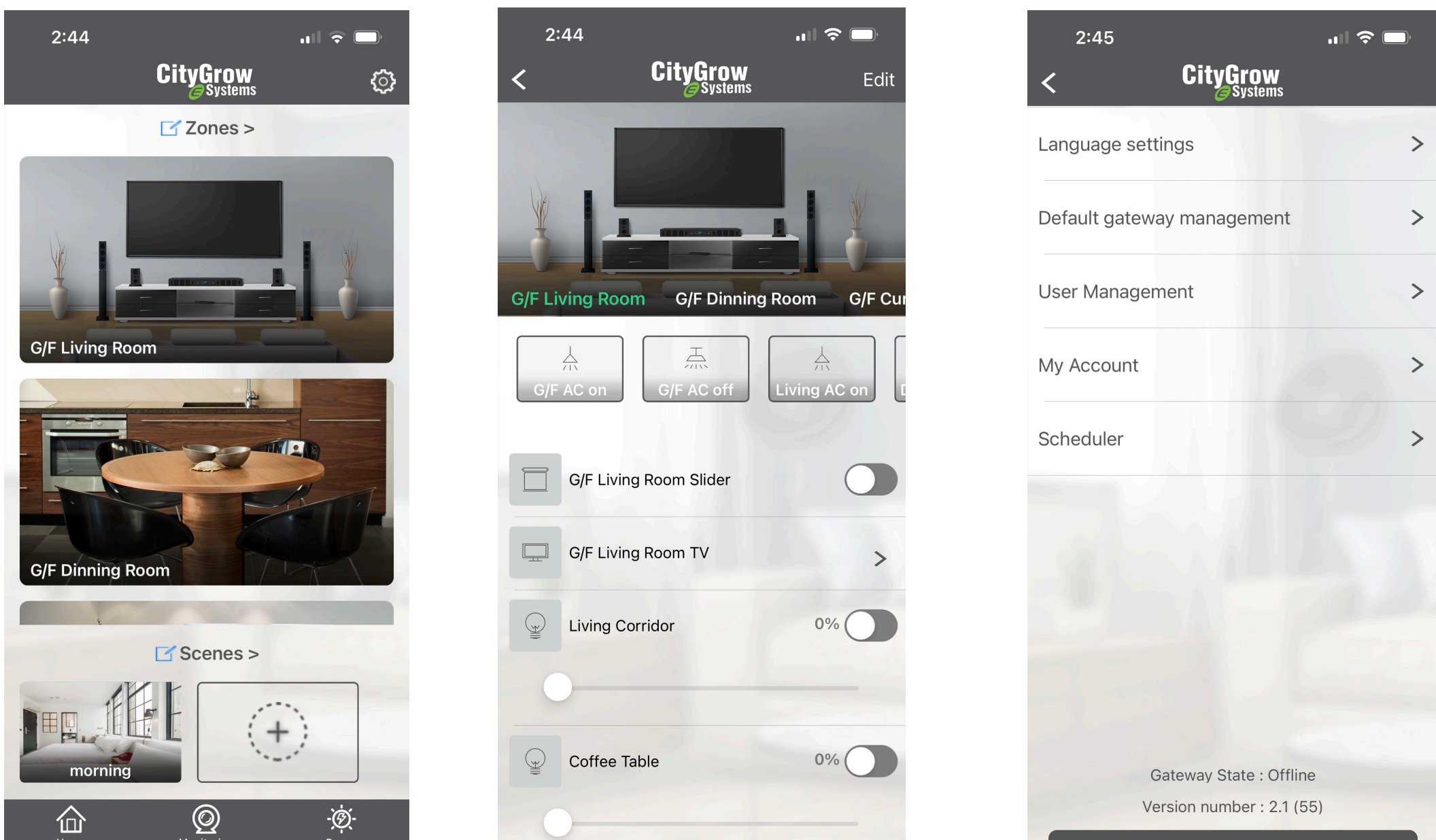
HomeNET Portal Web Version



HomeNET Portal Description

- 1. Hotel operator able to conduct individual control and scene control of the room through the HomeNET Portal, and also provide a user interface for easy management, which can monitor the status of all equipment and rooms in real time.
- 2. Hotel Manager also can search the guest room data records and environmental changes can also be observed on the platform for hotel analysis and maintenance purposes.

HomeNET2 Mobile Version



HomeNET2 Description

- 1. Hotel guests able to control the them-self guest room device, scene , real-time status monitoring, etc. through the HomeNET2 mobile app.
- 2. Before returning to the hotel, guests able to use the HomeNET2 APP to turn on the air conditioner in advance to enhance the experience and image of the hotel.