

CG500MS - INSTALLATION GUIDE



CG500MS
Wireless Motion Sensor

Ratings (see product spec. for details)

Power Supply	AAA alkaline batteries x 3pcs External DC6V 100mA (CG101AD – not included)
Estimated battery life	1 year (varies on usage)
RF Frequency	2.4GHz

Accessories



CG101AD
Mini Power Supply
(Not included)

Before getting started

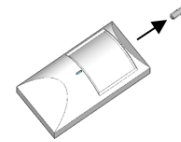
- ⚠ WARNING! It must be installed by a qualified electrician in accordance to all applicable regulations and building codes. Improper wiring can result in personal injury or damage to control units or other equipment. Always turn off circuit breaker or remove main fuse from power line before doing any work. To avoid overheating and possible damage to equipment.
- ⚠ WARNING! Do not operate when any lamps removed or burned out; replace any burned out lamps immediately; use only transformers that incorporate thermal protection or fused primary windings. This product is designed for residential and commercial use, for indoor use only.
- ⚠ WARNING! Install in accordance to all national and local electrical codes.
- ⚠ IMPORTANT! CityGrow® is not liable for any damage incurred with the misuse of the product.
- ⚠ IMPORTANT! Pre-setup can only be done by a professional technician or manufacturer agent.

Disclaimers and Copyright

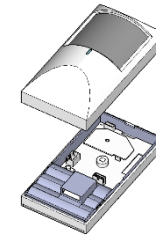
Nothing contained in this publication is to be construed as granting any right, by implication or otherwise, for the manufacture, sale, or use in connection with any method, apparatus, or product covered by letters patent, or as insuring anyone against liability for infringement of letters patent. Efforts have been made to ensure the accuracy and reliability of the data contained in this publication; however, CityGrow Energy Systems Limited. makes no representation, warranty, or guarantee in connection with this publication and hereby expressly disclaims any liability or responsibility for loss or damage resulting from its use or from the use of any product or methodology described herein; for any violation of any federal, state, or municipal regulation with which this publication may conflict; or for the infringement of any patent from the use of this publication. Nothing contained in this publication should be viewed as an endorsement by CityGrow Energy Systems Limited of any particular manufacturer's products.

Installation instruction

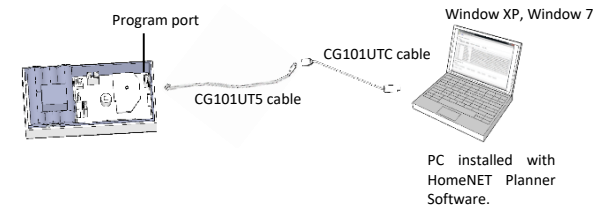
Step 1: Open the front cover by removing the fixing screw.



Step 2: Open the front cover.



Step 3: Connect the CG101UT5 and CG101UTC cables to a PC which installed with CityGrow's HomeNET Planner 2 Software. The CG500MS Wireless Motion Sensor will be powered by the connected PC via the cables, no battery is required in this procedure.



To setup the CG500MS on the HomeNET Planner 2 Software, user should assign a network ID to the CG500MS for performing scene control in the automation system.

Warning: The cables should be remained connected during the setup procedure. Refer to the user manual of HomeNET Planner 2 Software for product setup details.

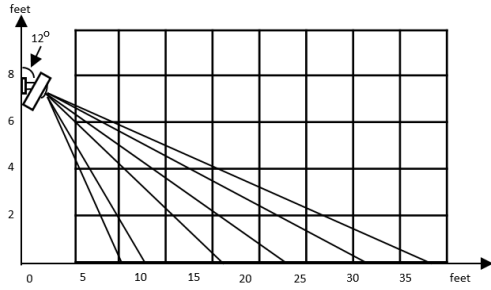
Step 4: Upon completion of setup on HomeNET Planner 2 Software, unplug the cables and put the front cover back to the main unit then fasten screw at the top.

Step 5: Insert 3 pcs of new AAA alkaline batteries into the battery compartment properly. The LED indicator will be brightened up for 2 seconds, if a motion is detected, the LED indicator will be brightened up for 2 seconds again.

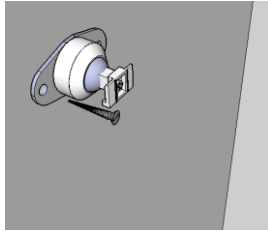
Step 6: Mount the CG500MS at a desired location. The following diagram will show a typical example.

Warning: **This product is designed for indoor use only**
It is not recommended to install the product near heat or strong radio sources.

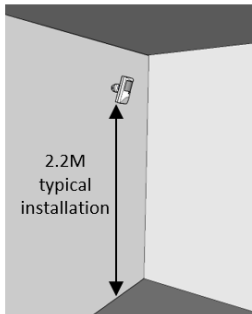
Step 6.1: Select a location to mount the CG500MS, the following diagram will show the motion sensor range and angle.



Step 6.2: Mount the wall mount hanger on the wall



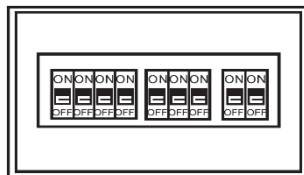
Step 6.3: Insert the CG500MS sensor into the wall mount hanger.



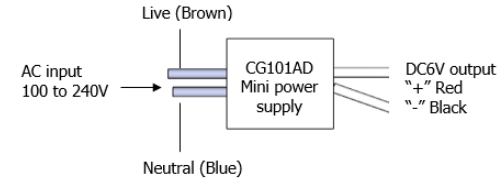
Step 7: Make a movement and test if the CG500MS sensor is operating normally. If a motion is detected, the LED with be brightened up for 2 seconds.

Connect the CG500MS with external power supply

STEP 1: IMPORTANT! Turn off main power at the main switch board.

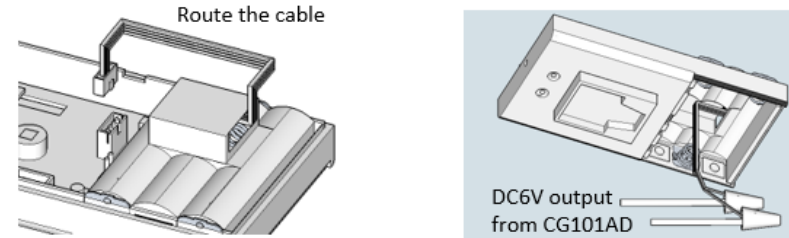


STEP 2: Connect the main power cable from the wall box to the Live and Neutral wires of the CG101AD Mini Power Supply (purchase separately). Make sure the Live is connected to the Brown wire (Live) and Neutral is connected to Blue wire (neutral) of CG101AD.

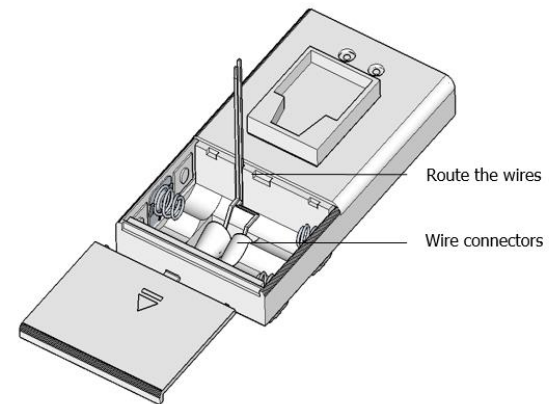


STEP 3: Plug the external DC power connector into the external DC socket and route the cable according to the following diagram.

Connect the DC output of the CG101AD to the external DC power connector, pay attention to the polarity of the wires, black is GND, red is DC 6V.



STEP 4: Locate the wire connectors inside the recess area of the battery compartment and address the cable before closing the battery cover.



For more details about the product series, please refer to the user manual and product specifications.

For more details on programming of the products, please refer to HomeNET Planner Software user manual.