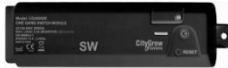
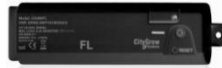


Product Specification



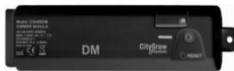
CG400SW

One-Gang Switch Module



CG400FL

0-10V Dimming Module



CG400DM

One-Gang Dimmer Module



CG400S2-CCP

One-Gang Curtain Control Switch
Module

Description

- ZigBee wireless remote control.
- Based on IEEE 802.15.4.
- 2.4GHz radio frequency.
- LED indicator for status indication.
- Local Test button.
- Local Reset button.
- Compact size and easy to install in suspended ceiling.
- Direct AC 220V input.
- CG400SW – On/Off control.
- CG400FL – 1-10V dimming control.
- CG400DM – leading edge dimming.
- CG400S2-CCP – Open/Close control for electric or motorized curtain and window blind.
- All the modules can be remotely controlled by Citygrow’s ZigBee devices/ panels.
- With CG102BS-R Base Station, all devices support iOS/Android App control.

Certifications

EN 50371 (EN 62479)

EN 60669-2-1


EN 60669-1+A1

EN 301 489-1

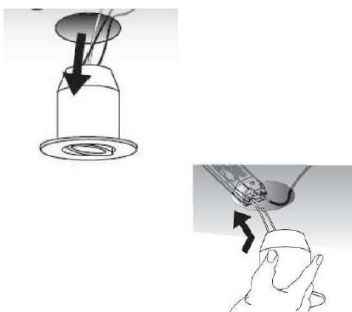
EN 301 489-3

EN 300 440-1

EN 300 440-2

E134517 

VDE 40027342



Suspended Ceiling Installation

Product Specification

Specifications

	CG400SW	CG400DM	CG400FL	CG400S2-CCP
Description	One-Gang Switch Module	One-Gang Dimmer Module	Two-Gang Dimmer Module	One-Gang Curtain Control Switch Module
Operating voltage	AV 220-240V, 50Hz			
Function	<ol style="list-style-type: none"> Built-in relay to control lighting circuit On/Off. One input for momentary type switch. Support wireless remote control with CityGrow's ZigBee keypads / devices. 	<ol style="list-style-type: none"> One-gang Leading-edge dimmer. One input for momentary type switch. Dim-up and dim-down by holding the momentary switch. Support wireless remote control with CityGrow's ZigBee keypads / devices. 	<ol style="list-style-type: none"> DC 1-10V output to interface with third party dimming driver. Built-in relay to control lighting circuit On/Off. Dim-up and dim-down by holding the momentary switch. Support wireless remote control with CityGrow's ZigBee keypads / devices. 	<ol style="list-style-type: none"> To control open/close /stop of electric curtain motor. Build-in two relays to control forward and reverse motion for electric motorized curtain. Two inputs for momentary type switch. Preset curtain Open/Close travel time. Support wireless remote control with CityGrow's ZigBee control panels/ devices.
Control communications	ZigBee, IEEE 802.15.4			
Radio frequency	2.4 GHz, 15 channel			
Radio reception range	100M (line of sight)			
Operational temperature	0°C to 40°C			
Humidity	5% to 95% non-condensing			
Storage	-20°C to 70°C			
Dimension L X W x D (mm)	140 x 37 x 31			

Product Specification

Specifications – Loads

	CG400SW	CG400DM	CG400FL	CG400S2-CCP
Description	One-Gang Switch Module	One-Gang Dimmer Module	Two-Gang Dimmer Module	One-Gang Curtain Control Switch Module
Resistive load (Per Gang) 1. Incandescent 2. Halogen 3. Electronic low voltage – ELV transformer	1000W	400W	N/A	N/A
Inductive load (Per Gang) 1. Magnetic low voltage – MLV transformer. 2. Iron core / Inductive transformer	1000VA	400VA	N/A	N/A
Fluorescent (Per Gang)	700W	N/A	700W 25mA max. for 1-10V DC output Max. 24pcs 1-10V dimming interface	N/A
Compact fluorescent - CFL (Per Gang)	400W Max. 24 pcs CFL**	250W Dimmable CFL Max. 20 pcs CFL**	N/A	N/A
LED – GU10 (Per Gang)	200W	40W	N/A	N/A
LED – MR16, MR11 (Per Gang) With electronic low voltage LED driver	400W Max. 10 pcs ELV LED driver*	80W Max. 15 pcs ELV LED driver*	400W 25mA max. for 1-10V DC output Max. 24pcs 1-10V LED dimming interface	N/A
LED strip (Per Gang) With electronic low voltage driver	400W Max. 10 pcs ELV LED driver*	N/A	400W 25mA max. for 1-10V DC output Max. 24pcs 1-10V LED dimming interface	N/A
Exhaust fan (Per Gang)	300VA	N/A	N/A	N/A
3 wire type AC curtain motor	N/A	N/A	N/A	300VA
Minimum load		5W		

**Remarks:

1. The maximum load requirements for fluorescent, CFL and LED loads can vary greatly depending upon the specific fixture and /or bulb being used.