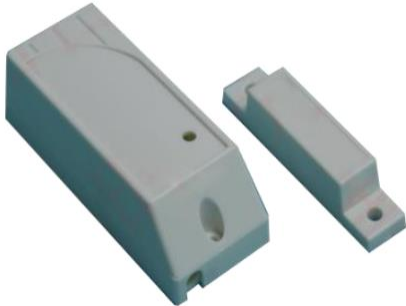


**CG500DS
WIRELESS DOOR SENSOR**



Description

- Support ZigBee wireless communication
- Based on IEEE 802.15.4
- 2.4GHz radio frequency
- Door magnet type sensor
- Sampling and transmission rates are configurable
- Software programmable alert status
- Powered by 2pcs x AAA alkaline batteries
- Screw mount or mount by double-side tape
- For security use
- Easy to install

Item	Specification
Power Supply	2pcs of AAA alkaline batteries
Communication	ZigBee wireless remote control. Based on IEEE 802.15.4. standard 2.4GHz radio frequency
Operating temperature	0°C to 65°C
Operating humidity	5% to 95% non-condensing
Unit Dimension L x W x D (mm)	82 x 33 x 25mm
Storage	-20°C to 70°C